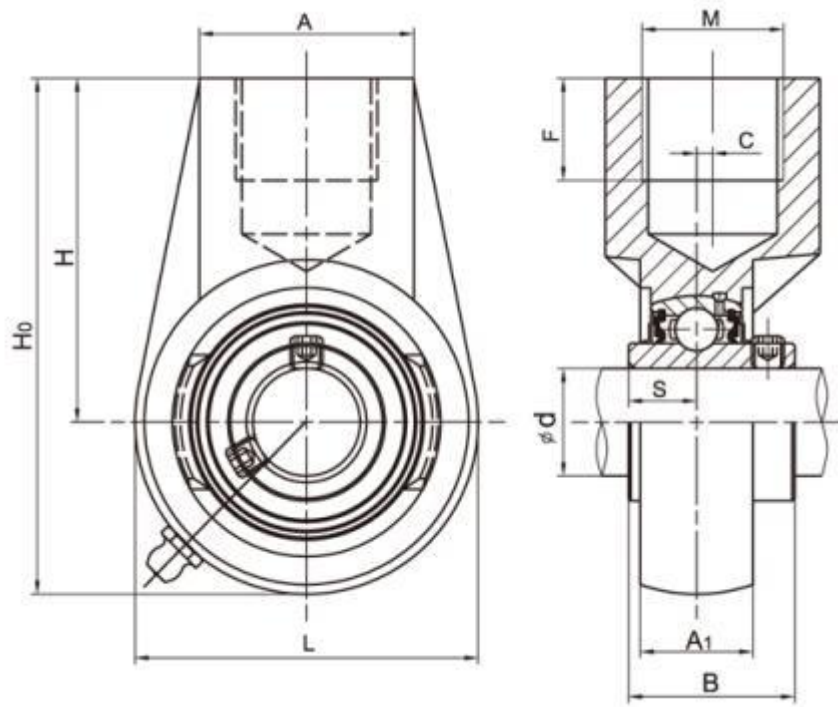


Hanger Bearing Units is one design of mounted ball bearing unit, UCHA2 is the suffix of this type bearing unit, the bearing unit have UC chrome steel pillow block bearings and HA housing with cast iron materials.

The bearing UC Series insert bearing have the same internal structure with deep groove ball bearing, but the insert bearing have the spherical outer surface of the outer ring and the wider inner ring.



| Unit No. | Shaft Dia | | Dimensions(mm) | | | | | | | | | | Weight |
|------------|-----------|------|----------------|-----|----|----|-------|----|---|----|------|------|--------|
| | d | | L | Ho | H | A | M(in) | F | C | A1 | B | S | (kg) |
| | (in) | (mm) | | | | | | | | | | | |
| UCHA204 | | 20 | 64 | 96 | 64 | 40 | G3/4 | 19 | 0 | 21 | 31 | 12.7 | 0.70 |
| UCHA204-12 | 3/4 | | 64 | 96 | 64 | 40 | G3/4 | 19 | 0 | 21 | 31 | 12.7 | 0.70 |
| UCHA205 | | 25 | 78 | 103 | 64 | 40 | G3/4 | 19 | 0 | 24 | 34.1 | 14.3 | 0.74 |
| UCHA205-14 | 7/8 | | 78 | 103 | 64 | 40 | G3/4 | 19 | 0 | 24 | 34.1 | 14.3 | 0.74 |
| UCHA205-15 | 15/16 | | 78 | 103 | 64 | 40 | G3/4 | 19 | 0 | 24 | 34.1 | 14.3 | 0.74 |

| | | | | | | | | | | | | | |
|------------|---------|----|-----|-----|----|----|------|----|---|----|------|------|------|
| UCHA205-16 | 1 | | 78 | 103 | 64 | 40 | G3/4 | 19 | 0 | 24 | 34.1 | 14.3 | 0.74 |
| UCHA206 | | 30 | 78 | 103 | 64 | 40 | G3/4 | 19 | 0 | 28 | 38.1 | 15.9 | 0.91 |
| UCHA206-17 | 1-1/16 | | 78 | 103 | 64 | 40 | G3/4 | 19 | 0 | 28 | 38.1 | 15.9 | 0.91 |
| UCHA206-18 | 1-1/8 | | 78 | 103 | 64 | 40 | G3/4 | 19 | 0 | 28 | 38.1 | 15.9 | 0.91 |
| UCHA206-19 | 1-3/16 | | 78 | 103 | 64 | 40 | G3/4 | 19 | 0 | 28 | 38.1 | 15.9 | 0.91 |
| UCHA206-20 | 1-1/4 | | 78 | 103 | 64 | 40 | G3/4 | 19 | 0 | 28 | 38.1 | 15.9 | 0.91 |
| UCHA207 | | 35 | 92 | 116 | 70 | 40 | G3/4 | 19 | 0 | 30 | 42.9 | 17.5 | 1.19 |
| UCHA207-20 | 1-1/4 | | 92 | 116 | 70 | 40 | G3/4 | 19 | 0 | 30 | 42.9 | 17.5 | 1.19 |
| UCHA207-21 | 1-5/16 | | 92 | 116 | 70 | 40 | G3/4 | 19 | 0 | 30 | 42.9 | 17.5 | 1.19 |
| UCHA207-22 | 1-3/8 | | 92 | 116 | 70 | 40 | G3/4 | 19 | 0 | 30 | 42.9 | 17.5 | 1.19 |
| UCHA207-23 | 1-7/16 | | 92 | 116 | 70 | 40 | G3/4 | 19 | 0 | 30 | 42.9 | 17.5 | 1.19 |
| UCHA208 | | 40 | 100 | 123 | 73 | 40 | G3/4 | 19 | 2 | 33 | 49.2 | 19.0 | 1.36 |
| UCHA208-24 | 1-1/2 | | 100 | 123 | 73 | 40 | G3/4 | 19 | 2 | 33 | 49.2 | 19.0 | 1.36 |
| UCHA208-25 | 1-9/16 | | 100 | 123 | 73 | 40 | G3/4 | 19 | 2 | 33 | 49.2 | 19.0 | 1.36 |
| UCHA209 | | 45 | 108 | 136 | 82 | 48 | G1 | 21 | 5 | 35 | 49.2 | 19.0 | 1.78 |
| UCHA209-26 | 1-5/8 | | 108 | 136 | 82 | 48 | G1 | 21 | 5 | 35 | 49.2 | 19.0 | 1.78 |
| UCHA209-27 | 1-11/16 | | 108 | 136 | 82 | 48 | G1 | 21 | 5 | 35 | 49.2 | 19.0 | 1.78 |
| UCHA209-28 | 1-3/4 | | 108 | 136 | 82 | 48 | G1 | 21 | 5 | 35 | 49.2 | 19.0 | 1.78 |
| UCHA210 | | 50 | 119 | 142 | 83 | 48 | G1 | 21 | 5 | 37 | 51.6 | 19.0 | 1.93 |
| UCHA210-30 | 1-7/8 | | 119 | 142 | 83 | 48 | G1 | 21 | 5 | 37 | 51.6 | 19.0 | 1.93 |
| UCHA210-31 | 1-15/16 | | 119 | 142 | 83 | 48 | G1 | 21 | 5 | 37 | 51.6 | 19.0 | 1.93 |
| UCHA210-32 | 2 | | 119 | 142 | 83 | 48 | G1 | 21 | 5 | 37 | 51.6 | 19.0 | 1.93 |
| UCHA211 | | 55 | 126 | 150 | 87 | 60 | G5/4 | 25 | 7 | 38 | 55.6 | 22.2 | 3.50 |
| UCHA211-32 | 2 | | 126 | 150 | 87 | 60 | G5/4 | 25 | 7 | 38 | 55.6 | 22.2 | 3.50 |
| UCHA211-34 | 2-1/8 | | 126 | 150 | 87 | 60 | G5/4 | 25 | 7 | 38 | 55.6 | 22.2 | 3.50 |

| | | | | | | | | | | | | | |
|------------|--------|----|-----|-----|-----|----|--------|----|-----|----|------|------|------|
| UCHA211-35 | 2-3/16 | | 126 | 150 | 87 | 60 | G5/4 | 25 | 7 | 38 | 55.6 | 22.2 | 3.50 |
| UCHA212 | | 60 | 142 | 173 | 102 | 60 | G5/4 | 28 | 9 | 42 | 65.1 | 25.4 | 3.90 |
| UCHA212-36 | 2-1/4 | | 142 | 173 | 102 | 60 | G5/4 | 28 | 9 | 42 | 65.1 | 25.4 | 3.90 |
| UCHA212-38 | 2-3/8 | | 142 | 173 | 102 | 60 | G5/4 | 28 | 9 | 42 | 65.1 | 25.4 | 3.90 |
| UCHA212-39 | 2-7/16 | | 142 | 173 | 102 | 60 | G5/4 | 28 | 9 | 42 | 65.1 | 25.4 | 3.90 |
| UCHA213 | | 65 | 166 | 200 | 117 | 70 | G1-1/2 | 32 | 9.5 | 44 | 65.1 | 25.4 | 5 |
| UCHA213-40 | 2-1/2 | | 166 | 200 | 117 | 70 | G1-1/2 | 32 | 9.5 | 44 | 65.1 | 25.4 | 5 |

Shandong Guanxian FenQi Bearing Co., Ltd. (registered trademark FQN), located in Guanxian Industrial Park, Shandong Province, FQN is a professional manufacturer of mounted ball bearing Unit UCP, UCF, UCFL, UCFC, UCFB, UCPA, UCFA, UCFS, UCPH with cast iron housing, and mount bearing unit SUCP, SUCF, SUCFL, SUCH with stainless steel housing, as well as the insert bearing UC, UK, HC, SB, SA types, all the above mentioned we can supply metric and inch size standard, which are produced in strict accordance with the international quality system standard with excellent equipment and perfect detection means. High precision, high performance and high reliability are the tenets we always adhere to. Excellent product quality and zero quality defects are our goal.